



BOROUGH OF RED BANK

COMMUNITY FORESTRY MANAGEMENT PLAN

An Action Plan for Community Forestry

In Cooperation with:
New Jersey Forest Service

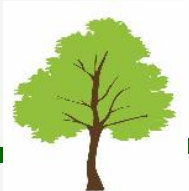
Prepared by: Borough of Red Bank Shade Tree Committee
Assisted by: William F. Brash Jr.
NJ Certified Tree Expert, CTE #375

Table of Contents

Table of Contents	2
Community Information Form	3
Introduction	4
Existing Forestry Management	4
Mission Statement	4
Goals and Objectives	4
Tree Hazard and Liability Statement	5
Community Overview	6-8
Community Forestry Program Administration.....	8-11
Community Map	21
Training Plan	11
Public Education, Awareness and Outreach	12
Statement of Shade Tree Budget	13
Statement of Plan Implementation	14-19
Tree Inventory/Assessment	14
Hazard Tree Identification.....	15
Tree Planting	15
Tree Maintenance and Care.....	15-16
Community Stewardship Incentive Program (CSIP)	20

APPENDICES

Appendix A Borough Map	21
Appendix B Shade Tree Ordinance	22-23



Community Forestry Management Plan

Municipal/County Information Form

Municipality: Borough of Red Bank

County: Monmouth

Address: Borough of Red Bank
PO Box 868
Red Bank, NJ 07701

Contact Name and Title: Maria Rotolo, Administrative Assistant

Phone #: (732)530-2748

Fax # and E-mail: (732)450-9109

Organization Name: Red Bank Shade Tree Committee

Mayor/County Freeholder's Signature: _____

Date of Management Plan Submission: March, 2011

Time Period Covered in Management Plan: 2011-2015

Community Stewardship
Incentive Program (CSIP)
Practices Identified in
Management Plan

- CSIP #1 Training
- CSIP #2 Community Forestry Ordinance Establishment
- CSIP #3 Public Education and Awareness
- CSIP #4 Arbor Day
- CSIP #5 Tree Inventory
- CSIP #6 Hazard Tree Assessment
- CSIP #7 Storm Damage Assessment
- CSIP #8 Tree Maintenance and Removals
- CSIP #9 Insect and Disease Management
- CSIP #10 Wildfire Protection
- CSIP #11 Tree Planting
- CSIP #12 Tree Recycling
- CSIP #13 Sidewalk Maintenance Problem
- CSIP #14 Stormwater Management
- CSIP #15 Other

**Official Use Only
Certification**

The above named municipality/county has made formal application to the New Jersey Forest Service. I am pleased to advise you that after our review, the NJ Forest Service has concluded that this plan meets the standards set forth by the State and the NJ Community Forestry Council and is approved for the period covered.

Signed _____

State Forester

Approved date _____

Community Forestry Management Plan

I. Introduction

A. Scope

This plan has been designed to demonstrate the manner in which the Borough of Red Bank currently manages the community tree resources under its jurisdiction including trees in parks, rights-of-way, along streets, and around Borough buildings and other holdings. This plan will also outline how Red Bank intends to further improve this system over the next five years.

B. Mission Statement

To maintain and promote a healthy, safe and sustainable shade tree resource that will physically, economically and aesthetically benefit the community and its residents in the most cost effective manner possible.

C. Goals and Objectives: The following is a list of current short and long term goals of Red Bank's Shade Tree Management Plan.

1. Complete the Borough-wide Pruning of the Community Forest Resource

- Objective 1: Write a successful CSIP Grant to fund the large tree pruning needed for Marine Park.(2011-2015)
- Objective 2: Train the DPU crews for early pruning cycle work, fifteen feet and down. (2012)

2. Complete an i-tree Inventory for the Borough's Tree Resource

- Objective 1: Train 2 Shade Tree volunteers on the i-tree assessment program.(2011)
- Objective 2: Institute the i-tree evaluation and inventory program to the Borough. (2012)
- Objective 3: Complete the inventory of all trees in the Parks. (2012-2015)

3. Continue the Hazard Tree Management Program

- Objective 1: As funding permits, hazardous trees will be pruned or removed.(2011-2015)
- Objective 2: Partner with Monmouth County and the NJDOT to assess the hazard trees along their ROW's. (2011-2015)

4. Increase Awareness of Red Bank's Tree Resource to Borough Residents

- Objective 1: Increase outreach to local builders and contractors on tree protection by educating them on the science of protecting trees. (2015)
- Objective 2: Publish 2 articles every year on the Borough website or other local publications. (2011-2015)
- Objective 3: Continue the Tree City USA program and the Arbor Day celebration for the next 5-years. (2011-2015)

5. Update the Current Public Tree Protection Ordinance

- Objective 1: Continue to monitor and revise the Borough's tree ordinance as the science evolves. (2011-2015)



The Borough Shade Tree Committee is looking to increase the technical capacity of the Tree Program through i-tree training. This State of the Art tree-management program will allow the Borough to better manage the existing tree resource and assist us in planting the next generation of trees.

Medy Quiroz, Chairperson ~ Borough Shade Tree Committee



D. Liability Statement

Although Red Bank recognizes all of the benefits provided to the community by its tree resource, it also recognizes the liabilities. As trees are living entities, it is inevitable that as they mature they eventually require care, maintenance, removal and replacement. Red Bank must, however, work within a reasonable budget and may not be able to meet each and every demand placed on them. Therefore it is the intent of this plan to focus available resources to reduce obvious and predictable tree hazards to provide commensurate reduced risks to public safety.

Since it is impossible to predict or prevent all hazardous conditions that may arise, Red Bank is updating this plan to continue to be proactive in its tree maintenance programs. Proactive tree management should reduce the occurrence of unexpected events.

Following this plan will demonstrate Red Bank's commitment to proper tree management within the Borough's rights-of-way and public holdings with the aim of reducing the potential for future tree related accidents and thereby reducing its exposure to liabilities and increasing public safety.

II. Community Overview

The History of Red Bank (Excerpted from an article by former Red Bank Mayor Benedict R. Nicosia, Esquire). Red Bank, as a part of a larger area, became an entity on March 17, 1870. However, an English sailor as early as September 5, 1609 saw the steep banks of red clay and called it "The Red Banks". The first official use of the name in Monmouth County was when it was described in a contract between Thomas and Hannah Morford of Shrewsbury and Joseph French, early Monmouth County settlers. The house built on the property stood at 98 West Front Street just opposite the Red Bank Public Library until it was torn down in 1998.

Located on the Navesink River it covers an area of 1.8 miles. It is 47 miles south of New York City. It has an ideal climate and an average temperate of 51.8 degrees.

In 1780 the noted American poet, William Cullen Bryant after a visit to Red Bank wrote, "Red Bank is in every sense, a pretty village and what perhaps is better -a thriving one. Rarely do we find in an American town, this union of thrift and beauty."

The ancient inhabitants of Red Bank were the Lenni Lenape tribe. Skeletons and Indian artifacts have been found near Hubbards' Bridge and the area known as Oyster Shell Point where the present Oyster Point Hotel now stands. In 1801 the last of the tribe moved to Onieda Lake in New York State.

In 1665 Red Bank and the surrounding area was sold to seven Englishmen and soon after the purchasers and families began to settle in the area. In 1832 there were 225 people living in Red Bank. Richard Stout, one of the original seven, later settled in Middletown. A descendent became a New Jersey State Senator.

Early settlers and developers of Red Bank had streets named after them. Some are Throckmorton Avenue, Reckless Place -named after Anthony Reckless, who became a New Jersey Senator and built his home in Red Bank which still stands on Broad Street and is now home to the Red Bank Woman's Club. Other streets are Morford Place, Chestnut Street and McLaren Street.



The earliest Court was in the Bank Tavern established by Joseph Price who also built sloops and large sailboats that sailed between New York and Red Bank carrying lumber, furniture and the food raised by local farmers. As time went on Red Bank developed residentially and commercially.

In 1816 a combination church and schoolhouse was built on Globe Court. It was used as a church for both Protestants and Catholics and also a school. The land was later purchased by the Boro Bus Company. The Mechanic Street School, now a professional building, was built nearby. The White Homestead, built by Robert White, an early settler, still stands at 20 South Street. In those days, the Union Hotel, now the present site of the Olde Union House and The Globe Hotel, were where visitors to Red Bank stayed.

The Navesink River developed early as a sailing and ice boat racing center and has remained popular to the present day.

Red Bank has churches of every denomination. The Presbyterian Church on Tower Hill, the highest point in Red Bank was originally the home of Abram Elkus, who became Ambassador to Turkey during the Roosevelt Administration. His daughter, Katherine, a popular Red Banker, served as Mayor of Red Bank and later as Ambassador to Denmark.

Red Bank was a popular shipping point for sailing boats and later, steamboats that traveled between Red Bank and New York with stops at Perth Amboy and Brooklyn. Steamboats in the early 19th century carried passengers and supplies to New York. At one time as many as two dozen steamboats traveled the Navesink River.

In 1905 the first Police Department was established. It now has a department of 46 police officers.

In 1939 the King and Queen of England visited Red Bank and later that year President Franklin Roosevelt came to Red Bank for a visit.

Today Red Bank is a town of approximately 11,500 residents. Transportation by train and bus is available to all towns and cities in New Jersey and New York City.

Marine Park is a busy boat center that docks boats of all sizes. The Monmouth Boat Club built in the early 19th century is a favorite sailing center for persons of all ages.

The River Center promotes retail events such as Cruising with the Oldies, Food Festivals and band concerts at Marine Park and Riverside Gardens Park.

In 2002 the Red Bank Visitors Center was established at the Red Bank Railroad Station which distributes information to visitors and residents of the surrounding areas regarding lodging, events, retailers, recreation and commercial organizations, as well as local history.

The newly renovated Molly Pitcher Inn and the Oyster Point Hotel serve gourmet food and drink as well as providing superior accommodations to travelers. The town also provides parochial as well as public education for grades from Kindergarten through High School and is fortunate enough to be the home of Riverview Medical Center with approximately 500 beds serving the medical needs of the community.



B. The History of Red Bank's Shade Tree Management Program

Since its creation, Red Bank has been a strategic riverside community with most of its original tree resources contained in native Oak and Beech forests. Today, the borough is over 90% developed, and the majority of the tree resources lie on private property. As for the public tree resource, it mainly consists of 12 different tree species along roadways between the curb and sidewalk in a traditional tree lawn.

The Red Bank Shade Tree Committee was formally established in April 2004. This advisory board will, with the adoption of this management plan, continue to strive to help Red Bank become more proactive in its approach to tree care issues. Prior to this committee's establishment, tree related issues were handled by the Borough Arborist, the Department of Public Utilities and the Red Bank Environmental Commission. The Shade Tree Committee will continue to foster a cooperative environment between these agencies for the betterment of Red Bank's tree resource and therefore its residents and visitors. Tree maintenance in the past including small tree and brush removal, minor pruning of deadwood and crown raising over roadways have been handled by the Department of Public Utilities tree crews. Larger removals and emergencies have been handled by outside contractors. This will continue for the foreseeable future.

Since the inception of the STC the Borough used part of a grant from the Department of Community Affairs to plant in excess of 400 trees. The Borough has also been working with their local utility Jersey Central Power and Light to replace trees that need to be removed underneath overhead conductors. The Shade Tree Committee would like to continue to build upon this relationship with JCP&L and expand the planting program throughout the borough. The Shade Tree Committee intends to locate any vacant planting pits available for street and park plantings and work towards replacements wherever possible, i.e., where the width of the planting strip and the absence of overhead wires permit.

The STC has continued to develop a hazardous tree management and a remediation program to help beautify the community and reduce risks to Red Bank's residents. The relatively small size of the borough made this a reasonable goal for this first five-year period provided funds for training become available. A complete survey should cover all municipal rights-of-way, plus all parks and public buildings in the borough. A preliminary windshield survey performed in 2005 covered 15.4 miles of roadways and determined that approximately 12% of the trees posed a greater than average risk of structural failure due to defective or dead limbs, trunks or root flares. The species diversity in the surveyed area was comprised of 4 Acer, 2 Quercus, and 2 Platanus species along with 4 other notable species along the borough rights-of-way.

Since 2005 the STC has completed a full inventory. With the most notable tree problem being the large number of trees that have been victimized by improper pruning by both homeowners and the utility companies. Some of this is the result of having the wrong tree in the wrong place. Working with JCP&L to continue a remove-and-replace program should alleviate part of the problem along the public right-of-way. Development of a public education program should help to reduce improper tree care on private property. Since this is such a large problem in the borough, public education about proper tree care and pruning will be a high priority of this plan.

The current Borough tree resource consists of the usual; Red maple, Sugar maple, Norway maple, London Planetree, Silver maple, Red, Pin, and White, oaks and some not so usual, Willow, Swamp white, Shumard and Overcup oaks. There are also plantings in the Borough of Zelkova and Linden. Recent plantings have included European hornbeam, Japanese tree lilac, Kwanzan and Yoshino cherry.



“Red Bank’s trees have “character” and the Borough Shade Tree Committee works hard to protect the health and aesthetics of our unique tree resource.”

Ed Zipprich
Shade Tree Liaison to the Borough Council

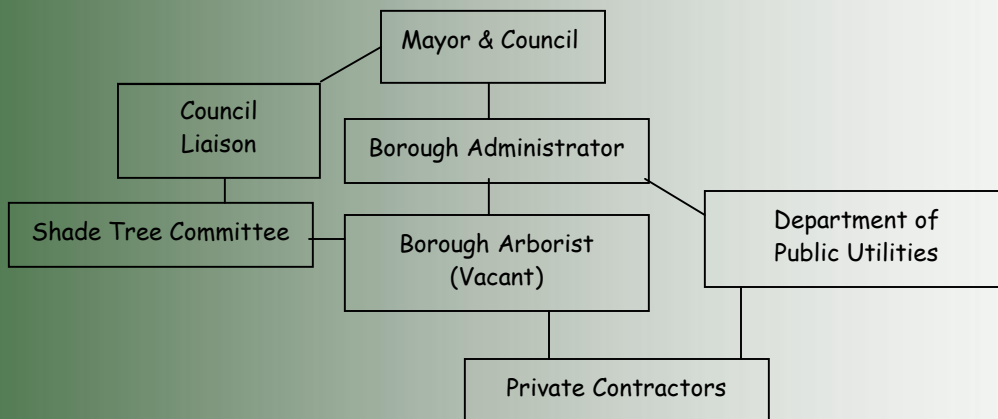


Tree/sidewalk conflicts, narrow planting strips, vehicle damage to low branches and trunks, excessive mulch and improper planting depth, girdling roots (mainly on the Maple species) and drought stress were also notable problems that need to be addressed in the future. There are most certainly other insect, disease and cultural problems present, but none of these are currently at an intolerable level or worthy of note at this time. Despite the long list of maladies listed above, 75-80% of the trees in the surveyed area are in fair to good condition.

The Shade Tree Committee intends to submit this 2nd Community Forestry Management Plan to the Mayor and Council for approval. It is the intent of this plan to establish goals and initiate objectives that will protect and enhance the tree resource of Red Bank through a program of planting and preservation that will benefit present and future generations of the community. Once this Community Forestry Management Plan is accepted by the state, it will be presented to the Planning Board for incorporation into the new Master Plan.

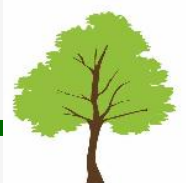
IV. Community Forestry Program Administration

The Red Bank Shade Tree Committee is an advisory board charged with making recommendations for the care of the Borough's tree resource. In reality, it is a cooperative effort of the Mayor and Council, Department of Public Utilities and many other boards and agencies working with the Red Bank Shade Tree Committee to achieve this goal. The following chart depicts those involved in the Shade Tree Management process as they pertain to Borough or County roadways.



A. The Mayor and Council

- 1.) The Mayor is responsible for appointing the 5 members of the Red Bank Shade Tree Committee with the consent of the Council.
- 2.) The Mayor and Council review the policies and plans of the Red Bank Shade Tree Committee.
- 3.) The Mayor and Council approve annual budgets for the Red Bank Shade Tree Committee and the Department of Public Utilities.
- 4.) Council Liaison to the Shade Tree Committee reports to the Mayor and Council on pertinent issues and recommends the annual budget.



B. Borough Administrator

- 1.) The Borough Administrator helps to review the plans and policies of the Red Bank Shade Tree Committee.

C. Chief Financial Officer

- 1.) Works with the Mayor and Council to establish the operating budgets of the Shade Tree Committee and Public Utilities Department.

D. Red Bank Shade Tree Committee

The Red Bank Shade Tree Committee is a five member volunteer board appointed by the Mayor and Council. They are the advisory agency for all community trees on municipal streets, rights-of-way, parks, or other properties. Their duties include:

- 1.) Advise regarding the planting, removal and general maintenance of Borough trees.
- 2.) Develop and recommend the policies and goals that will preserve and develop Red Bank's tree resource
- 3.) Perform public outreach to foster better understanding and care for Red Bank's trees on both public and private properties.
- 4.) Assisting in the handling of any complaints or requests received for work on Borough trees.
- 5.) Develop and review annual budgets with the Council Liaison and CFO and submit them to the Mayor and Council.

E. Borough Arborist (vacant)

- 1.) Reviews any requests for tree planting, removal or maintenance, and makes the necessary inspections. The primary source of professional advice to the Shade Tree Committee
- 2.) Trains and assists the Department of Public Utilities in tree maintenance.
- 3.) Solicits bids from private contractors when tree maintenance cannot be performed by the Department of Public Utilities
- 4.) Supervises and inspects all work done by private contractors on Borough properties.

F. Environmental Commission

- 1.) The Environmental Commission cooperates with the Shade Tree Committee in tree related projects.

G. Director of Public Utilities

- 1.) Supervises and inspects all work done by the Public Utilities Crew, and private contractors on Borough properties.
- 2.) Develops annual plans and budget requests for tree maintenance costs.

I. Public Utilities Crew

- 1.) Responsible for certain tree removal, pruning and brush clean-up along municipal roadways and on borough properties.
- 2.) Responsible for some planting and upkeep of young trees along municipal roadways and on Borough properties.
- 3.) Reporting of any tree hazards or other problems (sidewalk) to the Director of Public Utilities



3.) Reporting of any tree hazards or other problems to the Director of Public Utilities immediately.

J. Private Tree Contractors

Private contractors are responsible for the following:

- 1.) Provide proof of appropriate insurance, certifications and licenses as necessary to the appropriate department heads.
- 2.) Report prior to and following all work performed to the appropriate department supervisor.
- 3.) Complete all work in a safe and timely manner according to all applicable safety standards set by OSHA or ANSI, as they pertain to tree care operations.
- 4.) Follow all current arboricultural practices and recommendations.
- 5.) Report all hazards or problems directly to appropriate department head immediately.

K. Utility Line Clearance Contractors

- 1.) Must notify the Monmouth County Engineering Department or Monmouth County Shade Tree, Red Bank Director of Public Utilities, the Borough Arborist, and the Red Bank Shade Tree Committee prior to the start of any non-emergency work.
- 2.) Must follow all current arboricultural practices and recommendations.
- 3.) May assist Public Utilities Department Tree Crews in clearing trees to safe distance from their facilities when necessary.
- 4.) In the absence of a Borough Arborist Utility Crews are directed by the Dept. of Public Utilities.

L. General Public

- 1.) Report all requests for planting, removal or maintenance to the Red Bank Borough Shade Tree Committee or the Department of Public Utilities.
- 2.) Assist in follow-up care to the newly planted trees on adjacent properties or in County or Borough rights-of-way.

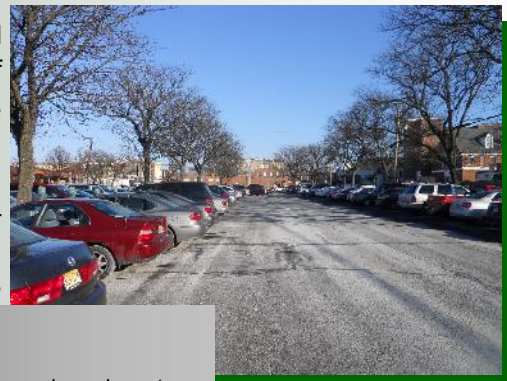
M. NJ DOT Tree Crews

- 1.) Responsible for the maintenance and removal of trees along state roadways in the borough.

N. The Monmouth County Board of Chosen Freeholders

Tree maintenance along county roadways will be referred back to Monmouth County. The care and maintenance of those trees will follow the plan outlined in Monmouth County's Shade Tree Management Plan.

- 1.) The Board of Chosen Freeholders is responsible for appointment of the Monmouth County Shade Tree Commission.
- 2.) The Board of Chosen Freeholders authorizes new policies and plans and approves annual budgets.



"Red Bank's parking lots are shaded to reduce the urban heat island effect of asphalt in the summer."

Bill Brooks
Shade Tree Committeeman



P. Director of Monmouth County Shade Tree

- 1.) Reviews any requests for tree planting, removal or maintenance and makes the necessary inspections.
- 2.) Supervises and inspects all work done by Monmouth County Shade Tree Crews, and private contractors on County properties.
- 3.) Develops annual plans and budget requests for tree maintenance costs.
- 4.) Responsible for tree removal and pruning in County rights-of-way and other County facilities.
- 5.) Report any tree hazards or other problems to the appropriate department supervisor immediately.

9. Tree Service Request Process

Planting, removal, or pruning requests can be made by any department or individual residing in Red Bank so long as the tree in question is on property owned and maintained by the Borough of Red Bank . All requests must follow this procedure.

- A. All requests must be mailed or called in to the Red Bank Shade Tree Committee, the Department of Public Utilities, or the Borough Arborist, (currently vacant).
- B. All information pertinent to the request should be sent to the Red Bank Shade Tree Committee or Department of Public Utilities prior to action, except in the case of emergencies, which will be sent directly to the Director of Public Utilities or Borough Arborist to be handled in an expeditious manner.
- C. Non-emergency work requests will be surveyed by the Borough Arborist and reported to the Shade Tree Committee. The Shade Tree Committee will prioritize and refer the requests to the appropriate department, County or Borough.
- D. Work requests will be completed in the order in which they were received (excluding emergency or priority work) and will be completed in a reasonable time period.
- E. All property owners adjacent to the requested work and/or those making the request will be notified of any action to be taken, even if no action is deemed necessary at that time.

V. MAP See Appendix A-page 21

VI. Training Plan

Since arboriculture is constantly changing with fast-paced technological and scientific innovations, Red Bank recognizes the need for a broad based and ongoing training program for individuals at all levels of the Shade Tree Management Program. From Public Utilities Employees to Committee Members and Administrators, all need continued technical and managerial information to benefit Red Bank's tree resource.

A. Current Training

The Red Bank Shade Tree Committee and the Department of Public Utilities have a portion of their budgets dedicated to ongoing training of its Committee members and Public Utilities Crews.

The Red Bank Shade Tree Committee encourages and provides for its members to



participate in continuing education classes and CORE training as included in the New Jersey Shade Tree & Community Forestry Assistance Act. At the time of this writing:

1. 1 Municipal Employee, the Director, DPU, and 4 Shade Tree Committee members are CORE trained.
2. Several members of the Shade Tree Committee have attended continuing education courses at the Shade Tree Federation's annual meeting
3. Four members of the Shade Tree Committee and several employees of the Department of Public Utilities have had in house hazardous tree identification training.

The above mentioned courses and others are available to all individuals in the Shade Tree Management Program upon request, if funds are available.

B. Goals and Objectives

1. To have all individuals involved in the Shade Tree Management Program CORE trained by sending at least one member to CORE training and shade tree meetings each year until all individuals involved in the Tree Management

Program meet those requirements, starting with one Shade Tree Committee Member and one Public Utilities employee the first year.

2. Increasing the quality of care given to Red Bank's trees by providing Public Utility Crews and Shade Tree Committee Members with the most current technical arboricultural information.

Ensuring the safety of Public Utilities Crews and residents by providing current and advanced training in hazard tree identification, basic insect and disease ID, equipment operation/safety, and electrical hazard awareness. Satisfying the requirements of the Community Forestry Assistance Act, making Red Bank eligible for immunity from liability under the Tort Claims Act by:

Gaining acceptance of this Management Plan and working toward the goals outlined herein.

VII Public Education, Awareness and Outreach

Having just completing its 6th year, the Red Bank Shade Tree Committee strives to follow in the footsteps of other more established and successful Boards and continue to raise the awareness of the public with regards to tree care and the benefits of trees. This will provide a valuable service to the community while encouraging public support for the Committee and its efforts on the community's behalf. The Committee is seeking to implement the following public outreach measures:

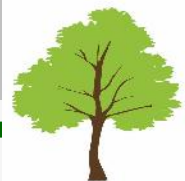
- A. Publish at least two articles every year in local publications.
- C. Distribute information brochures at one municipal event each year.
- D. Publicly speak at the Arbor Day celebration.
- E. Publishing Shade Tree Committee meeting dates in compliance with the "Sunshine Law".

Hold an annual Arbor Day Program to include:

- 1) Having the mayor proclaim the last Friday in April as Arbor Day on an annual basis.
- 2) Sponsoring tree planting programs in cooperation with the local schools.
- 3) Seeking the involvement of local civic organizations to participate in Arbor Day programs.
- 4) Developing a school bumper sticker or poster contest to be recognized on Arbor Day.

The Borough of Red Bank has a very comprehensive Website, including plenty of tree information.....

Boris Kofman, Secretary Shade Tree Committee



- 5.) Continue to achieve Tree City USA status, 5th year achievement status and over the next five years and beyond, striving for 10-year growth award achievements.
- G. Publish tree information and post an approved copy of this Community Forestry Management Plan on the borough website.

VIII. Statement of Tree Budget

Borough Shade Tree Budget

Budget Item	Amount	Notes
Training	\$100	
Equip. Depreciation	\$6000	
Watering/Pruning/Mulching	\$2054	DPU hourly rate at \$13/hr.
Tree related management (DPU)	\$3120	
Brush-Leaf Pickup	\$3000	
VOLUNTEER TIME		
Regular meetings	\$2270	Volunteer rate at \$25.22/hr.
Inventory	\$2572	
Professional Consultation	\$6000	
Inspection/Pruning	\$2623	
Watering/Mulching	\$656	
Training	\$404	
Community Events	\$303	
Resident request response	\$504	
Total	\$29,606	

IX. Shade Tree Management Plan Implementation

A. Tree Assessment and Inventory

Red Bank has a large tree resource comparable to like sized communities. A comprehensive computerized inventory was done by STC volunteers in 2006-2010. This inventory is available on the web. 75-80% of the trees in the comprehensive inventory were rated as **Fair-Good**.

2011-2015 Objectives

- 1.) Complete a cursory inventory of all trees in the borough parks.
 - a.) Identify and plant 200 trees in open planting spaces in the community.
 - b.) Identify possible tree and sidewalk conflicts.
 - c.) Help track maintenance cycles for systematic rotation pruning.
 - d.) Locate any historical or heritage trees.
 - e.) Continue to keep the completed data up to date in the tree inventory computer program.



B. Tree Hazard Identification and Management

Red Bank is dedicated to providing a healthy and productive tree resource for its residents in the safest and most cost effective manner possible. Public safety is of the highest concern throughout every aspect of the tree management program from planting to removal. Prior to the undertaking of this Community Forestry Plan, a preliminary Hazard Tree Assessment has already been completed through a cursory windshield survey covering 15.4 miles of roadway. Information gathered in that survey has been forwarded to the appropriate departments for hazard abatement work.

1. Goals

- a.) To ensure public safety in relation to trees on Red Bank Borough properties and thoroughfares.
- b.) To establish an ongoing comprehensive plan for Hazard Tree Assessment on all borough properties and thoroughfares.



*The trees in Marine Park, growing next to the Navesink River
make the park a special place....*

*Paul Sullivan
Vice Chairman Shade Tree Committee*



C. Tree Planting

The tree planting program as it exists now is designed to replace dead trees and trees removed under overhead utilities, provide new street trees for any open planting sites available and add species diversity to parks, and other facilities. Tree plantings are a function of available funds and the number of new trees planted are a direct result of the Borough being able to provide available funds or the availability of outside funding. Arbor Day and memorial plantings are also planned to be an integral part of Red Bank's tree planting program. Red Bank recognizes the need for diversity and stability in its aging tree population and intends to develop a formal plan to integrate young trees into areas with aging and declining tree populations. Implementation of this program will not only beautify the town, but also by diversifying the species and age of the trees in Red Bank, it will benefit the Community.

1. Goals

- a.) Improve species diversity throughout the Borough.
- b.) Increase the number of ornamental tree species to increase the aesthetic appeal to residents and visitors alike.
- c.) Increase the number of smaller ornamental tree species in close proximity to overhead utilities, reducing future tree and utility conflicts.
- d.) Seek better ways to maintain and help establish newly planted trees and reduce future tree / sidewalk conflicts, i.e. water, mulch and root barriers.
- e.) Expand current cooperation with the Environmental Commission and the Red Bank School District for future Arbor Day plantings.

2011-2015 Objectives

1. Find suitable tree species not currently existing on borough properties, and incorporate them into new plantings.
2. With the cooperation of Monmouth County tree crews and utility companies, continue removing declining and poorly pruned or over-pruned trees and replace them with smaller species around overhead utilities.
3. Solicit help of The Department of Public Utilities and residents in aftercare of new tree plantings.
4. Work with the Red Bank Environmental Commission and local schools on a cooperative Arbor Day Program.
5. Seek grants or donations to fund new plantings and beautification of Borough parks, including Adopt-a-Tree and memorial garden programs.

D. Tree Maintenance and Care

Red Bank recognizes that trees need general wellness care and not just emergency care. A proactive plan of routine scheduled maintenance will ensure a healthy, aesthetically pleasing and cost effective urban forest with a reduced hazard potential.

This management plan aims to provide a framework that will benefit and raise the level of care for all Borough owned trees and trees along Borough thoroughfares. Structural pruning schedules will be established to train young trees to reduce potential liabilities and maintenance costs.



Continued maintenance on established and mature trees should reduce the risk of hazardous situations and increase tree life spans, generating benefits to the community.

1. Goals:

- a.) To install healthy, viable trees into the existing landscape and assist to reestablish themselves as quickly as possible to insure their longevity.
- b.) Prune to train and develop young trees with good structure.
- c.) Maintain the health and extend the useful life span of existing trees.
- d.) Promote public safety on Borough properties and rights-of-way.
- e.) Maintain the maximum benefit of trees in the most cost effective manner.
- f.) Develop new and stronger tree ordinances.

2011-2015 Objectives

Seek cooperation from Monmouth County Shade Tree and NJ D.O.T. tree crews to begin a routine pruning cycle in Red Bank. Expand training for Department of Public Utilities tree crews to provide the best possible care to Red Bank's trees and safety for its employees and residents. Continue to work with utility companies to develop a removal and replacement program to eliminate future hazards and tree / utility line conflicts. Investigate needs for purchasing new tree care equipment.

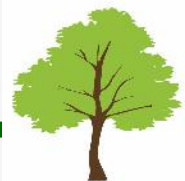
Seek additional funds for hiring of private contractors for general tree care needs beyond the scope of Monmouth County and utility cooperation to help meet the borough's goals of pruning 20% of their tree resource annually. Establish an annual education document and report of Shade Tree activities for the community at large to be distributed at a public event annually.

Shade Tree Management Plan Implementation

Timeline for the years 2011-2015

Year 1, 2011

- Continue to manage the township in the five management zones and initiate a 5 year cycle of hazard pruning and maintenance. Begin this year by completing a simple windshield survey hazard tree assessment to identify existing hazards in all five zones. This hazard assessment will be carried out by the Public Utilities Department, and the Shade Tree Committee.
- Continue already established tree planting projects. The Shade Tree Committee traditionally hires outside contractors to plant trees usually in the spring and fall, plus incidental planting and special projects such as Arbor Day utilizing volunteers. Planting is also done by bonding requirements from developers.



- Apply for Tree Planting Grant for large tree pruning needed in Marine Park..
- Keep the GIS Tree database and keep it current.
- Continue the official Borough Arbor Day celebration with local schools. -Have at least 2 articles published on tree related issues in local publications.
- Initiate discussions with the planning board to gain recognition of the Community Forestry Management Plan in the new Master Plan and Open Space Plan for the next revision.
- Work with the necessary departments to revise and strengthen current tree care and tree preservation ordinances.
- Increase the number of volunteers/DPU employees attending the NJ Shade Tree Federation Meeting for CORE training and CEU's. Continue a program of in-house training for the Public Utilities Department with the use of outside consultants and safety trainers. This year should focus on proper pruning, chain saw and equipment safety.
- Train 2 STC volunteers if i-tree training is available at the Shade Tree Federation Meeting in October 2011.
- Continue the monthly meetings with site plan reviews.
- Submit an Annual Accomplishment Report to NJ Forest Service.

Year 2, 2012

- Starting with the most recently planted trees, institute an early pruning cycle program starting at the 3+ year of growth. Train DPU staff on Natural target pruning. All pruning to be from the ground.
- Continue with regular tree planting. Consider applying for tree planting grant or some tree planting money from CSIP depending on the severity of the hazard problem in 2012.
- Institute i-tree assessment protocols for pre-disaster data needs, pursuant to hurricanes, wildfire or other natural disasters that effect the public tree resource.
- Meet with the Planning Board and Mayor and Council to review relevant ordinances for compliance with the Municipal Master Plan and to discuss what's working and what isn't. Ordinance review should include an update of the Approved Species Planting List and a review of the existing permitting process.
- Begin the inventory of all trees in the Parks.



- Continue working with local utilities to remove hazardous or troublesome and high maintenance trees under overhead conductors and replace with suitable species.
- Continue yearly Public Relations activities, such as Tree City USA recertification, Arbor Day celebrations, 2 newspaper articles and Sunshine Law notifications.
- Continue attendance at the New Jersey Shade Tree Federation Meeting (Shade Tree Committee and Department of Public Utilities). Continue in-house training of Public Utilities employees. The goal for this year is to hold tree identification and hazard tree identification courses.
- Review tree ordinances and determine if updating is needed.
- Continue cooperative effort with Monmouth County Shade Tree to establish an annual pruning cycle on county roads in Red Bank.
- Submit Annual Accomplishment Report to the New Jersey Forestry Service.
- Continue monthly meetings with site plan reviews.

Year 3, 2013

- Hazard tree removals / pruning should move on to the next priority zone as established in the windshield assessment.
- Tree Planting goals remain the same as last year.
- Continue the park tree inventory.
- Continue yearly Public Relations activities: Tree City USA recertification, Arbor Day celebration, 2 articles in the local newspaper, and Sunshine Law notifications.
- Continue training program with attendance at the NJ Shade Tree Federation Meeting (keep up with CORE and CEU requirements). Continue in-house training with Public Utilities, address any training needs that may present themselves as we work through the plan or as other things happen. Perhaps training on how to recognize and deal with Bacterial Leaf Scorch and Asian Long Horned Beetle will be necessary.
- Continue working with utility companies to remove hazardous or high maintenance trees under the overhead conductors and begin replacing them with smaller ornamental varieties.
- Continue cooperative effort with Monmouth County Shade Tree to establish an annual pruning cycle on county roads in Red Bank.
- Submit Annual Accomplishment Report to NJ Forest Service.
- Continue monthly Shade Tree Committee meetings with site plan reviews.
- Continue the Park inventory work.

Year 4, 2014

- Tree Planting goals should remain the same as in previous years, with possible adjustments considering the number of removals necessary as part of the hazard removal program and availability of grant money.
- Comprehensive street tree inventory should continue to be updated.
- Continue the trend of the “annual meeting” with the Planning Board, to keep them informed of our progress and to address any concerns. Push for the incorporation of the Community Forestry Management Plan into the Master Plan.
- Continue the Park inventory work.



- ❑ Continue Public Relations activities: Tree City USA recertification, Arbor Day celebrations, 2 articles in local newspaper, and Sunshine Law notifications..
- ❑ Training program will continue as usual, with the addition of inviting members of the Planning Board to join us (Shade Tree Committee and Department of Public Utilities) at the Shade Tree Federation Meeting.
- ❑ Continue cooperative effort with Monmouth County Shade Tree to establish an annual pruning cycle on county roads in Red Bank.
- ❑ Submit annual accomplishment report to New Jersey Forest Service.
- ❑ Continue working on gathering information for a significant tree list.
- ❑ Continue monthly Shade Tree Committee meetings with site plan reviews.

Year 5, 2015

- ❑ Increase outreach to local builders and contractors on tree protection by educating them on the science of protecting trees.
- ❑ Public Relations activities will remain the same: Tree City USA recertification, Arbor Day celebration, and Sunshine Law notification and 2 articles in local newspaper (one of these should be a review of accomplishments in following the Management Plan over the past 5 years).
- ❑ Training goals will also remain the same as last year, with a focus on any specific topics/problems that may have come up as a result of working through this management plan, or topics that may be seen as necessary to move forward through the next 5 year plan.
- ❑ Continue to work with local utilities in the removal and replacement project.
- ❑ Continue cooperative effort with Monmouth County Shade Tree to establish an annual pruning cycle on county roads in Red Bank.
- ❑ Submit the Annual Accomplishment Report to the state.
- ❑ Continue monthly meetings with site plan review.
- ❑ Create and submit the next 5 year Community Forestry Management Plan. Apply for a CSIP grant to fund this project.
- ❑ Complete the Park inventory project.



New Tree Planted
at Riverside Gardens



COMMUNITY STEWARDSHIP INCENTIVE PROGRAM (CSIP)

The following is a summary of how each of the fifteen Community Stewardship Incentive Program (CSIP) practices is addressed by this Community Forestry Management Plan.

CSIP #1: Training

This practice is addressed on page 11.

CSIP #2: Community Forestry Ordinance Establishment

This practice is addressed on page 4 and Appendix B.

CSIP #3: Public Education and Awareness

This practice is addressed on page 12.

CSIP #4: Arbor Day

This practice is addressed on page 4.

CSIP #5: Tree Inventory

This practice is addressed on pages 4,16.

CSIP #6: Hazard Tree Assessment

This practice is addressed on pages 14,15.

CSIP #7: Storm Damage Assessment

This practice is addressed on page 4,14.

CSIP #8: Tree Maintenance and Removals

This practice is addressed on pages 4, 15-16.

CSIP #9 Insect and Disease Management

This practice is addressed on pages 12.

CSIP #10: Wildfire Protection

This practice is addressed on page 17.

CSIP #11: Tree Planting

This practice is addressed on pages 7, 15.

CSIP #12: Tree Recycling

This practice is addressed on page 4.

CSIP #13: Sidewalk Maintenance Problem

This practice is addressed on pages 8,9, 13.

CSIP #14: Stormwater Management

This practice is addressed on pages 16.

CSIP #15: Other

This practice is addressed on pages 4.



**Opportunity is
missed by most
because it is
dressed in
overalls and looks
like work.**

Thomas Edison





Navesink River

township of Middletown

Appendix A Borough Map



Swimming River

Borough of Tinton Falls

Borough of Shrewsbury

Borough of Little Silver

**ORDINANCENO 200724
ORDINANCE OF THE BOROUGH OF RED BANK
MONMOUTH COUNTY NEWJERSEY
PROVIDING FOR THE PLANTING CONTROL PROTECTION
REGULATION AND IMPROVEMENT OF TREES
UPON PUBLIC HIGHWAYS AND PUBLIC PLACES**

Sec 1 DEFINITIONS

A Borough Arborist shall mean the Borough of Red Bank Arborist

B Shade Tree Committee shall mean the Shade Tree Committee of the
Borough of Red Bank

C Street shall mean

- 1 Public Right of Ways
- 2 Municipal Parks and Parkways
- 3 County Roads
- 4 State Highways

D Tree shall mean any living deciduous or coniferous tree with a normally anticipated
Mature height of twenty feet 20 or greater

E Person shall mean every person firm association partnership and corporation

F Public Utility Company shall refer to a public utility as defined in the Revised Statutes
of The State of New Jersey RS 48213

G Plant Construction as applied to public utility companies shall mean poles wires ca
bles subsurface conduits pipes manholes and appurtenant facilities of such companies
Installed in a street

Sec 2 REQUIRED PERMITS NON UTILITY OPERATIONS

A No person shall do any of the following acts to any Tree on a Street without the prior
permit

1 Cut prune climb with spikes break damage remove or kill

2 Cut disturb or interfere in any way with any root

3 Spray with any chemical

4 Fasten any rope wire sign or other device Nothing herein shall prevent any
Governmental agency from affixing in a manner approved by the Shade Tree
Committee a public notice upon a tree in connection with administering governmental
affairs

5 Remove or damage any guard or device placed to protect any tree

6 Place or distribute chemicals including but not limited to salt deleterious to tree
health

7 Maintain a stationary fire or device that vaporizes noxious fumes deleterious to tree
health

8 Plant any tree on a street

9 Remove soil either for trenching or otherwise

10 Conduct razing removal or renovation of any structure if deemed to be damaging
To neighboring trees

11 Construct new sidewalks and or driveways with any material whatsoever within
Five feet of at tree.

B Non emergency requests to permit actions identified in items 1 through 8 in Section 2A should be directed to the Borough Arborist the Shade Tree Committee or the Department of Public Works Emergency requests should be directed to the Borough Arborist or the Department of Public Works

C Requests to permit other actions should be directed to the appropriate Borough of Red Bank agency.

Sec 3 REQUIRED PERMITS UTILITY OPERATIONS EXCEPTIONS

A The Borough Arborist may grant to Public Utility Companies a blanket permit for
1 tree pruning for line clearance and
2 for the installation and maintenance of subsurface and above ground Plant Construction if there is interference with or endangerment to trees

The Borough Arborist shall notify the Borough of Red Bank Administrator and the Shade Tree Committee whenever such a permit is granted

B Public Utility Companies may during periods of emergency without specific prior permit

1 install temporary attachments to trees and

2 make emergency subsurface repairs

C Each Public Utility Company shall exercise reasonable diligence in the maintenance of its Plant Construction so as to avoid damage to trees under the jurisdiction of the Shade Tree Committee

Sec 4 VIOLATION AND FINES

A Any person found guilty of violating any of the provisions of these regulations shall upon conviction by the Municipal Court of the Borough of Red Bank, County of Monmouth may be fined a sum of not exceeding fifteen hundred dollars \$1500.00 for each offense Each day after the notification any violation of this ordinance shall continue and shall constitute a separate offense

B In addition to the fine of \$1500.00 referred to in Section 4A the Borough of Red Bank May impose an additional civil penalty of an assessment paid to the municipality based Upon the value of the tree as determined by a Certified Tree Expert or trained forester or by the formula of not exceeding 3900 per square inch of a cross section of the trunk Measured 4.5 feet above ground level. This amount shall be modified by the trees Species, variety, location, and its condition at the time of damage or destruction

C The Code Enforcement Department and the Borough Administrator shall have the Authority to issue summonses to initiate proceedings for the collection of civil penalties And o otherwise enforce the provisions of this ordinance.

Pasquale Menna Mayor Carol A Vivona Borough Clerk
First Reading May 16 2007
Final Reading May 29 2007

Ordinance # 2004-15

**ORDINANCE OF THE BOROUGH OF RED
BANK, MONMOUTH COUNTY, NEW
JERSEY CREATING A SHADE TREE
COMMITTEE**

BE IT ORDAINED by the Governing Body of the Borough of Red Bank that the Revised General Ordinances of the Borough of Red Bank, Chapter II "Administration", Article VI "Boards, Commissions, Bureaus and Authorities", is amended and supplemented by adding a
a
new Section 2-53 "Shade Tree Committee" to read as follows:

SECTION ONE:

2-53 SHADE TREE COMMITTEE

2-53.1 Creation; Composition. There is hereby created a Shade Tree Committee which will be known as "The Shade Tree Committee of the Borough of Red Bank". The Committee shall consist of five (5) members, all to be appointed by the Mayor with the advice and consent of Council. The members shall be residents of the Borough and shall serve without compensation except as hereinafter provided. Members shall be appointed on the basis of their qualifications, fitness and desire to fulfill and advance the objectives and purposes of the
Committee as set forth herein.

2-53.2 Terms of Appointment to Committee. The initial Committee members to be appointed shall be appointed for staggered terms so that the term of one member shall expire in one year and the terms of two members shall expire in each of the next two years.
Thereafter, all members shall be appointed for a three year term. All vacancies shall be filled for
the unexpired term only. Members shall serve until their successors are appointed and qualified and they shall receive no compensation for their services.

2-53.3 Removal of Members. The Mayor and Council shall have the discretion, upon recommendation from the Committee, to remove any member who is not fulfilling his or her duties and responsibilities.

2-53.4 Election of Officers; Meetings.

- a. The members of the Committee shall annually elect from their own number a Chairperson, Vice Chairperson and Secretary. The duties of the Chairperson shall be to set the meeting dates, conduct the meetings of the Committee, appoint subcommittees and report on such to the Mayor and Council. The duties of the Vice Chairperson shall be to assist the
Chairperson in the completion of his or her duties and to act in his or her stead during an absence. The duties of the Secretary shall be to record the minutes of all meetings of the Committee and to receive and transmit all correspondence of the Committee.
- b. The Committee shall meet regularly in connection with the performance of its

duties. It may adopt rules and regulations in order to facilitate the carrying out of its duties and the conduct of its meetings.

2-53.5 Budget. During the month of December of each year, the Committee shall submit a budget request to the Mayor and Council. In each annual budget of the Borough a sum shall be appropriated as may be determined by the Mayor and Council to be necessary for the Committee to accomplish the purposes set forth herein and to implement those recommendations of the Committee which the Mayor and Council, in its discretion, deems feasible and appropriate.

2-53.6 Powers and Duties. The powers and duties of the Committee shall be as follows:

- a. To foster and promote arboriculture and the preservation and planting of shade trees within the Borough.
- b. To identify and recommend to the Governing Body locations on Borough of Red Bank public land where trees should be planted and tree maintenance would be beneficial. This includes areas where new trees can be planted and existing trees can be pruned or removed if they are dying or present a hazard. The Committee shall recommend a priority of locations where trees should be planted on Borough property.
- c. To assist the Governing Body in obtaining grants or other resources for shade tree purposes.
- d. To make recommendations to the Code Enforcement Officer, or other responsible enforcement officer, to cite a property owner for the remediation or removal of any trees on private property that are deemed to endanger the public safety, health or welfare.
- e. To review applications pending before the Planning Board or Board of Adjustment and make comments and recommendations to the Boards concerning such applications.

SECTION TWO: Any ordinances or portions thereof which are inconsistent with the provisions of this Ordinance are hereby repealed.